

SURFACEVISION

**SMART
ADVISOR[®]**

for

**PAPER, BOARD, AND TISSUE PROCESS
MONITORING**



METEK[®]

SURFACE VISION

**GIVING YOU THE
WHOLE PICTURE**

The leading automated surface inspection partner for fast and accurate web inspection and monitoring.

SmartAdvisor is the original video monitoring solution for continuous processes that helps maximize machine efficiency and yield rates. Designed for today's hands-on troubleshooter, it delivers proven and significant benefits within weeks of installation.

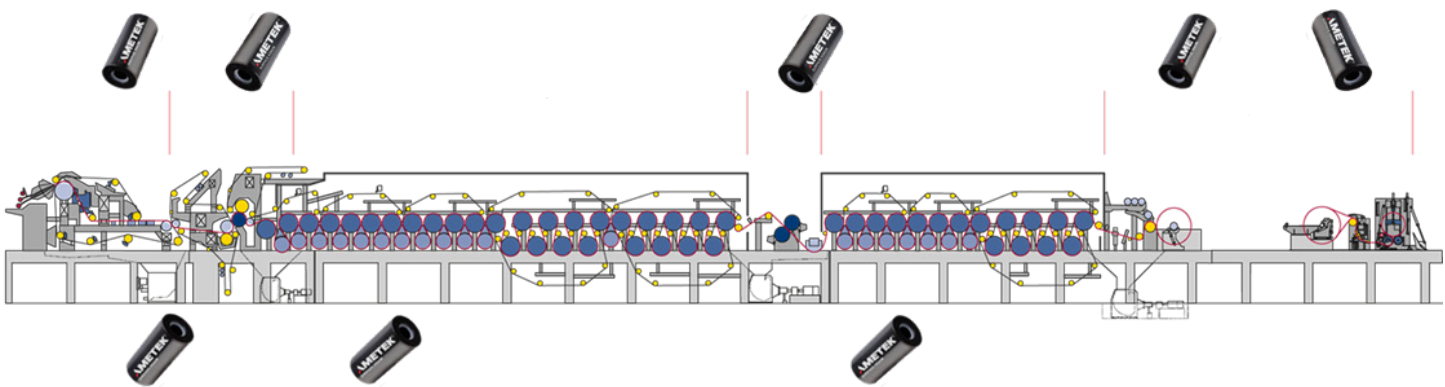
A versatile, easy-to-use vision system, SmartAdvisor provides high-speed, high-definition video monitoring and process analysis to the paper, board, and tissue industries.

Using perfectly synchronized high-speed cameras strategically placed along the paper machine, SmartAdvisor accurately syncs video frames from each camera to generate a complete overview to help identify the root cause of web defects and breaks.

SMARTADVISOR BENEFITS

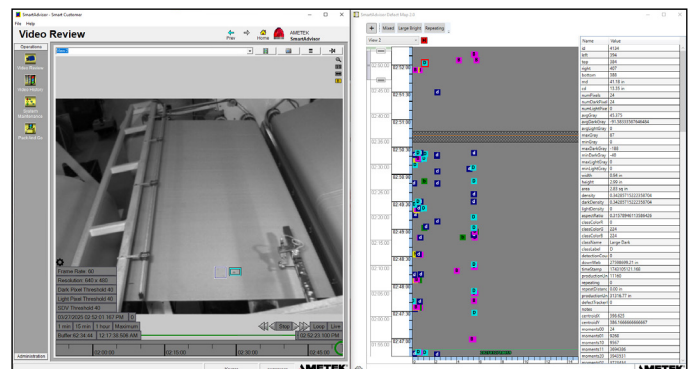
- Increased line efficiency and yield
- Real-time root cause analysis
- Scroll back captured video at full resolution
- Full frame rate over multiple shifts
- Flexible, scalable solution
- Integration with SmartView® Inspection System
- World-class service and support

FAST PROCESS INTEGRATION



SMARTADVISOR FEATURES

- Monitoring and event capture
- Simultaneous video capture and review
- Automatic capture start
- Repeating defect identification
- Accurate image synchronization
- Synchronized defect map
- Power and temperature monitoring



KEY IMAGING CAPABILITIES

- **High-definition CMOS cameras** deliver exceptional image clarity for identifying root causes.
- **Many market-leading camera brands** are supported to provide flexibility in selecting the best camera for specific applications, including HD, high frame rate, and color options.
- **Multiviewer functionality** enables adjustable brightness, sharpness, and frame rates for operator convenience as well as multi-camera video review for comprehensive analysis.

ADVANCED HARDWARE SOLUTIONS

- **Fiber-optic backbone for cameras** reduces installation cost, offers higher system reliability and performance, and allows for easily adjustable camera locations.
- **High-density junction boxes** reduce installation cost, minimize space requirements, and allow for quick modifications.
- **Larger storage capacity for video review** - allows multiple hours of image storage at full resolution and frame rates
- **Increased camera density** on Digital Video Processing Node (DVP). SSD drives for OS and movie storage speed up booting and OS response times.

SMARTADVISOR COMPATIBILITY MATRIX

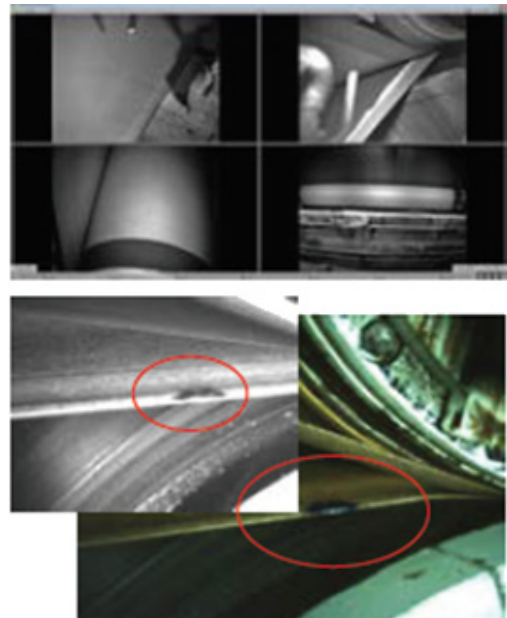
Version	4.6	5.0	5.1	5.2	5.3	6.0
Operating System						
Windows 11 (64-bit)	X	X	X	X	X	✓
Windows 10 (32/64-bit)	X	X	X	✓	✓	✓
Windows 7 (32-bit)	✓	✓	✓	✓	✓	✓
Camera Resolution						
3.2 MP	X	X	X	X	✓	✓
2.0 MP	X	X	X	X	✓	✓
1.3 MP	✓	✓	✓	✓	✓	✓
VGA	✓	✓	✓	✓	✓	✓

POWERFUL DIGITAL TOOLS

- **New User Interface** enhancing ease of use with customizable queries allowing tailored searches, such as defect classes or repeaters.
- **SteadyStream file storage** providing smoother playback for live video ensuring maximum system operation.
- **Synchronized Video and Defect Maps** correlating defects with production video for precise troubleshooting.
- **Simplified Video Sharing and collaboration** between mill operations, suppliers, and consultants with advanced review options for adjusting white balance, shutter speed, and frame rates up to 1,000 images/sec.
- **Rule-Based Classifier (Premium only):** Enhances defect detection with 100+ unique features and automated responses.

ENHANCED LIGHTING ENVIRONMENT

- **High-temperature LED lights** with dependable performance in heat-intensive areas.
- **Pulsed LED lights** provide crisp, high-quality images with powerful and efficient lighting. Redesigned for efficient heat dissipation and easier maintenance.



SURFACEVISION

ABOUT AMETEK SURFACE VISION

AMETEK Surface Vision is the world leader in automated online surface/web inspection and monitoring solutions. Our broad product range is optimized for the monitoring and inspection of webs and surfaces, and for process surveillance applications.

The SmartView and SmartAdvisor product lines deliver robust, flexible solutions to continuous production processes across a number of industries, with hundreds of customers and more than 3,000 installations worldwide.

Our systems have become vital to increasing efficiency, streamlining operations, improving product quality and reducing costs and waste in industrial processes. Manufacturers in the metals, paper, plastics and non-woven industries rely on our solutions to detect surface flaws or defects, and optimize process efficiency, at their production facilities across the globe.

We continue to innovate, providing cutting-edge technologies and world-class technical support that delivers highly accurate defect data, high-definition video, intelligent grading, archiving and detailed reporting. Customers who use AMETEK Surface Vision's services get the benefits of:

- **Reduced operational costs**
- **Process optimization**
- **Reduced process upsets (breaks, wash-ups, etc)**
- **Improved product quality**
- **Maximized yield**
- **More thorough and objective grading of material**
- **Detection, classification and visualization of defects**
- **Minimized need for manual inspections**
- **Inspection reports you need, in a form you can use**

Based in Hayward, California, AMETEK Surface Vision has offices and sales representatives around the world. We are part of the Process and Analytical Instruments Division of AMETEK Inc., a leading global manufacturer of electronic instruments and electromechanical devices.

SURFACE VISION WORLDWIDE

USA: +1 510 431 6767

CHINA: +86 215868 5111
EXT 172

EUROPE: +49 721 627267-0

JAPAN: +81 3 4400 2350

INDIA, KOREA, TAIWAN:
+82 31 888 5225

Improve your quality, reliability, and speeds:
ameteksurfacevision.com or contact us at:
surfacevision.info@ametek.com



AMETEK[®]
SURFACE VISION